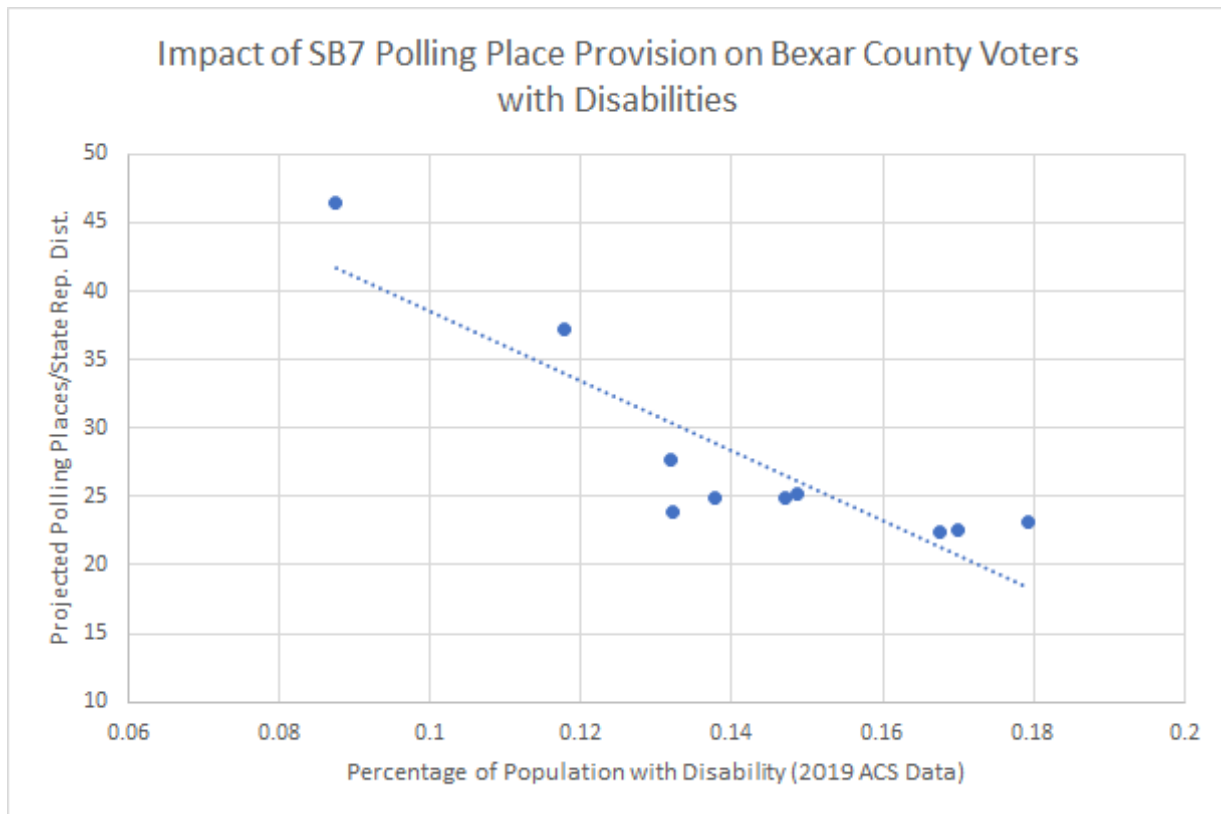




## Effect of SB7 Polling Place Provision on Voters with Disabilities

Section 3.06 of SB7 would result in fewer polling places in areas where a higher percentage of the population has one or more disabilities. The graphs below compare the projected number of polling places in each state representative district under SB7 to the percentage of the population with a disability in that district, using 2019 American Community Survey Data. Because the engrossed version of the Bill uses “eligible voters,” which is an ambiguous and not clearly calculable metric, these use registered voters in 2020 as a proxy. In all 5 of the affected counties, SB7 would lead to a discriminatory trend in polling place allocation, though the effect would be particularly dramatic in Bexar and Travis counties.



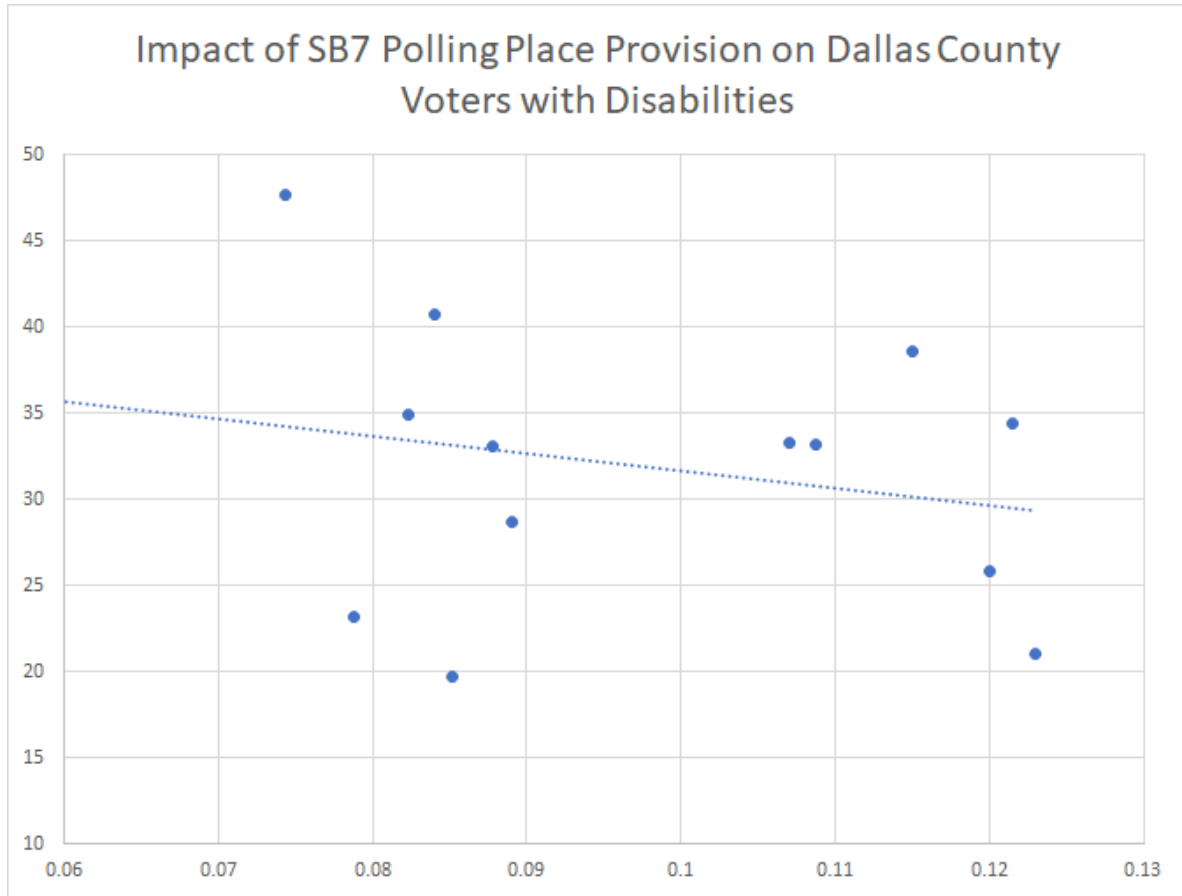


TEXAS  
CIVIL RIGHTS  
PROJECT



# TEXAS

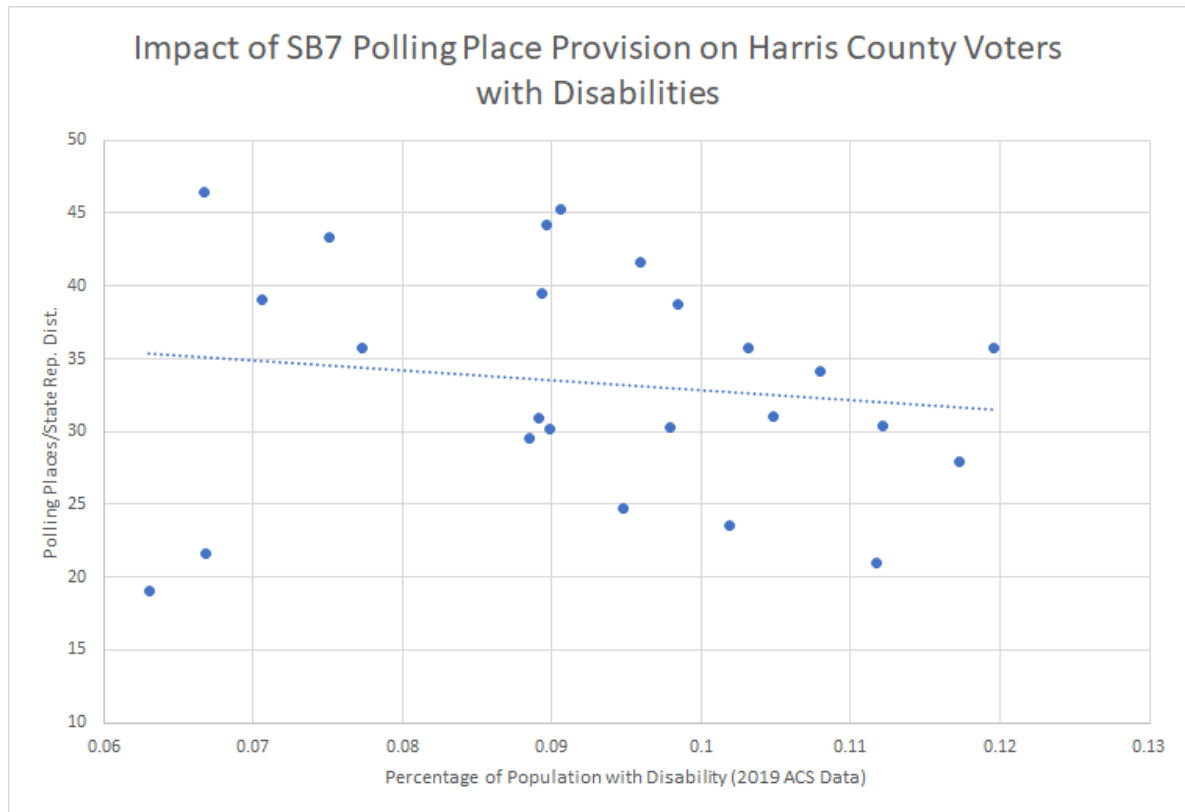
CIVIL RIGHTS  
PROJECT





# TEXAS

CIVIL RIGHTS  
PROJECT





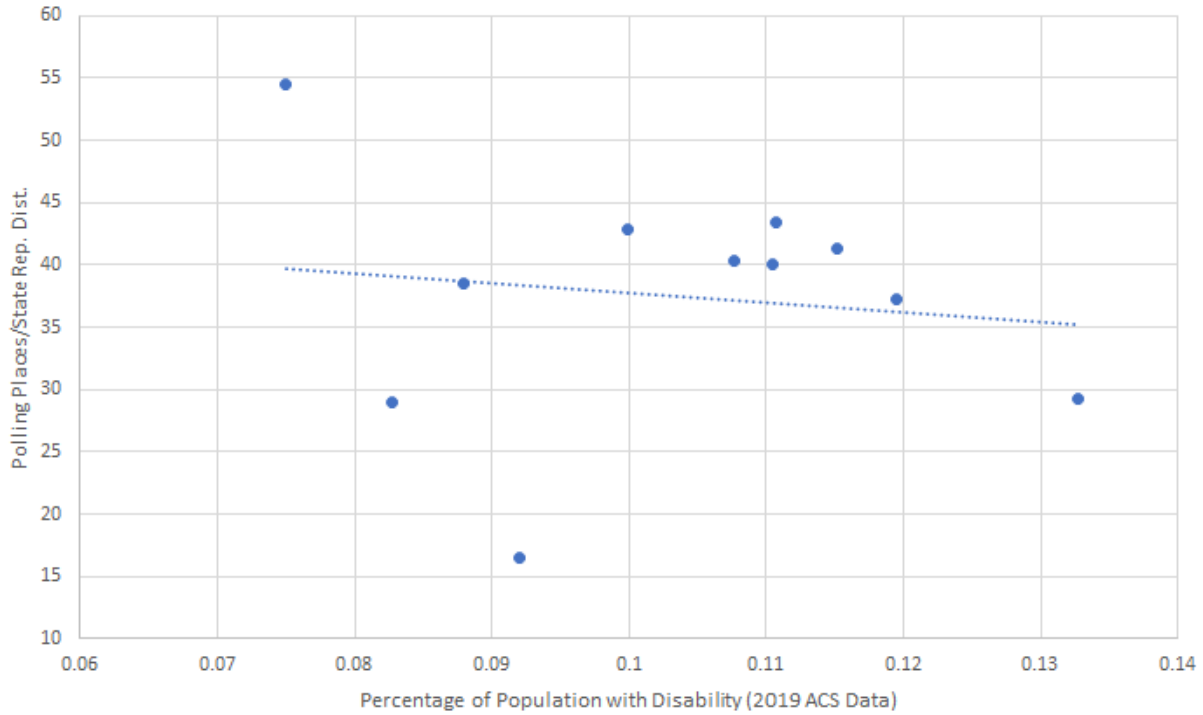
TEXAS  
CIVIL RIGHTS  
PROJECT



# TEXAS

CIVIL RIGHTS  
PROJECT

## Impact of SB7 Polling Place Provision on Tarrant County Voters with Disabilities



## Impact of SB7 Polling Place Provision on Travis County Voters with Disabilities

